

Patient advice sheet

Bucks Integrated Respiratory Service (BIRS)

A patient's guide to nebuliser equipment – cleaning and maintenance

Description of Nebuliser treatment

A nebuliser is drug delivery device that converts a drug solution into an aerosol mist by passing a pressurised gas through it. The drug is then directed into your lungs.

Nebulising a drug is a highly effective method of delivering drugs directly into your lungs, providing the correct equipment and gas flow is used with the appropriate drugs. You will be offered a nebuliser on loan if you need one for a period of treatment, or may need to buy one for your long term use.

The Parts:

Compressor unit – when in use do not leave it on the floor

This is the driving force that enables a nebuliser to convert the medicine into a gas.

The compressor forces the air through the drug solution into the nebuliser chamber where it is converted into the mist, which you breathe in through a mouthpiece. A mouthpiece will be used to deliver your nebuliser therapy. This is connected to the nebuliser chamber and placed between your teeth and sealed by the lips while inhaling the medicine.

A mouthpiece is most commonly used as it prevents the medicine from getting into the eyes or causing irritation.

Nebuliser Chamber

The nebuliser chamber is where you put your liquid medication.

Tubing

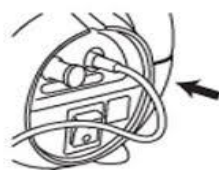
Tubing is used to get air from the compressor to the bottom of the nebuliser chamber.

How to Use:

Filling the Nebuliser Chamber – for single patient use.

Will it help?

- Connect one end of the driveline to the outlet filter on your compressor.

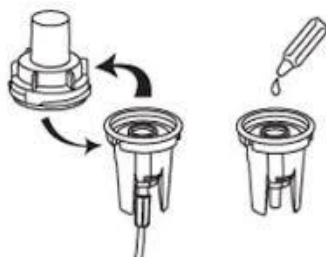


Patient advice sheet

- Connect the other end of the driveline to the bottom of the blue nebuliser cup.



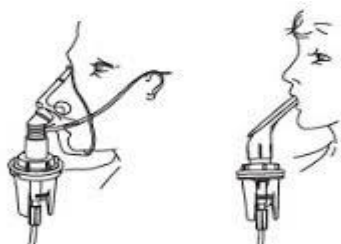
- Remove the nebuliser top from the cup and pour medicine into the cup (max 10ml).



- Screw the top back onto the cup.



- Connect either the face mask or mouthpiece to the nebuliser top.



Administering the Medication

- Switch the compressor unit on.
- Sitting in an upright relaxed position, place the mouthpiece into the mouth and start breathing slowly and do not breathe quickly.
- Switch off the compressor when the misting has stopped.
- Unplug the mains lead.

Patient advice sheet

Cleaning

- In order that you benefit fully from your equipment, it is important that the machine and accessories are kept in a clean condition.
- Ensure that the medication chamber is taken apart and washed in warm soapy water after each use.
- Rinse and dry.
- The jet holes should be blown clear by attaching the chamber to the air outlet from the compressor and running the machine for a couple of minutes.
- It is advisable that the tubing is disconnected from both the outlet filter and the chamber after each use to prolong the life of the connector.
- Once a week soak the chamber in boiling water and washing up liquid for 10 minutes and dry thoroughly.

Changing the attachments

It is recommended that the following disposable items should be changed as follows:

Nebuliser Chamber	Change every 3 months
Inlet Filter	
Driveline	
Face Mask	

Mouthpiece	Change every 12 months
Outlet Filter	

Buckinghamshire Integrated Respiratory Service (BIRS)
The Annexe
Thame Community Hospital
East Street
Thame
OX9 3JT

Direct Dial: 01296 255670
www.buckshealthcare.co.uk
Email: buc-tr.birs@nhs.net

Monday to Friday – 8.15 to 18.30
Weekends/Bank Holidays – 9.00 to 16.30

If you require medical advice out of hours please dial 111.
In the event of an emergency please call 999.

Patient advice sheet

Please remember that this leaflet is intended as general information only. We aim to make the information as up to date and accurate as possible, but please note that it is subject to change. Please therefore always check specific advice on any concerns you may have with your doctor.

How can you help reduce healthcare associated infections?

Infection prevention & control is important to the well-being of our patients and for that reason we have infection prevention & control procedures in place. Keeping your hands clean is an effective way of preventing the spread of infections. Please follow our infection prevention and control guidelines when visiting our healthcare sites. Further information is available on our website.

Patient Advice Sheet

If you would like a copy of this information on audiotape, in large print or translated, please call the Patient Advice Liaison Service on 01296 831120 or email bht.pals@nhs.net

এই তথ্যে সাহায্য পড়া যায় অথবা বৃহৎ আকারে মত বিক; ফরম্যাটে পাওয়া যাবে, এবং অনুরোধে অন্যান্য ভাষায়ও পাওয়া যেতে পারে। আমরা তথ্যের জন্য আপনার ডিক্রিপ্টারের সাথে কথা বলুন।

Na żądanie te informacje mogą zostać udostępnione w innych formatach, takich jak zapis większą czcionką lub łatwą do czytania, a także w innych językach. Aby uzyskać więcej informacji, porozmawiaj ze swoim zespołem specjalistów.

Macluumaadkaan waxaa loo heli karaa qaab kale, sida ugu akhrinta ugu fudud, ama far waa weyn, waxana laga yabaa in lagu heli luuqaado Kale, haddii la codsado. Wixii macluumaad dheeraad ah, kala hadal kooxda xarunta caafimaadka.

Bu bilgi, kolay okunurluk veya buyuk baskilar gibi alternatif bicimlerde sunulabilir, ve talep uzerine Alternatif Dillerde sunulabilir. Daha fazla bilgi icin klinik ekibinizle irtibata gecin.

یہ معلوم ات متبادل فارمیشن میں ن دستیا کی جا سکتی ہیں، جیسا کہ پہلے میں آسنی ای باڈی ن رٹ اور درخو است پر م تبادل زبانوں میں بھی دستیا ہو سکتی ہیں۔ مزید معلومات کے لیے، اپنی کیلنکل ٹیم سے بات کریں۔