

Buckinghamshire Healthcare NHS Trust

2025 Strategy



Developing our Strategy

OUTSTANDING CARE

HEALTHY COMMUNITIES

AND A GREAT PLACE TO WORK



At the end of 2019 senior leaders from across BHT began to review and update our strategy.

During September and October 2020 over 300 members of our workforce (70% patient-facing) contributed to updating our mission, vision and values.

During the second half of 2020 we led in-depth community engagement. We received almost 3,000 responses to an online survey and held more than 30 focus groups and interviews.

Our new strategy (including clinical strategy) was approved in private by our Board in May.

We have engaged partners in the Integrated Care Partnership and other stakeholders including local politicians, MPs, regional clinical senate and the regional NHSEI team.

Plans were presented at the Joint ICS Governing Body and discussed with Buckinghamshire Council Executive in July 2021.

We plan to publish our strategy in September and begin workforce and public engagement.

Any planned changes are subject to appropriate patient and resident engagement and involvement

Our Vision, Our Priorities

OUTSTANDING CARE

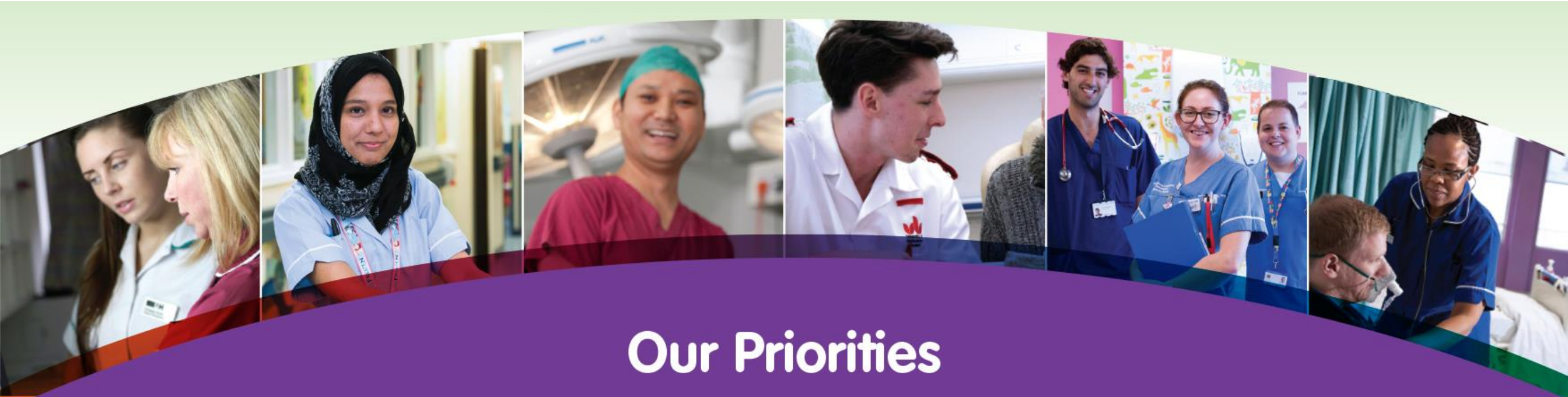
HEALTHY COMMUNITIES

AND A GREAT PLACE TO WORK

OUTSTANDING CARE

HEALTHY COMMUNITIES

AND A GREAT PLACE TO WORK



Our Priorities



Provide outstanding,
best value care



Take a leading role
in our community



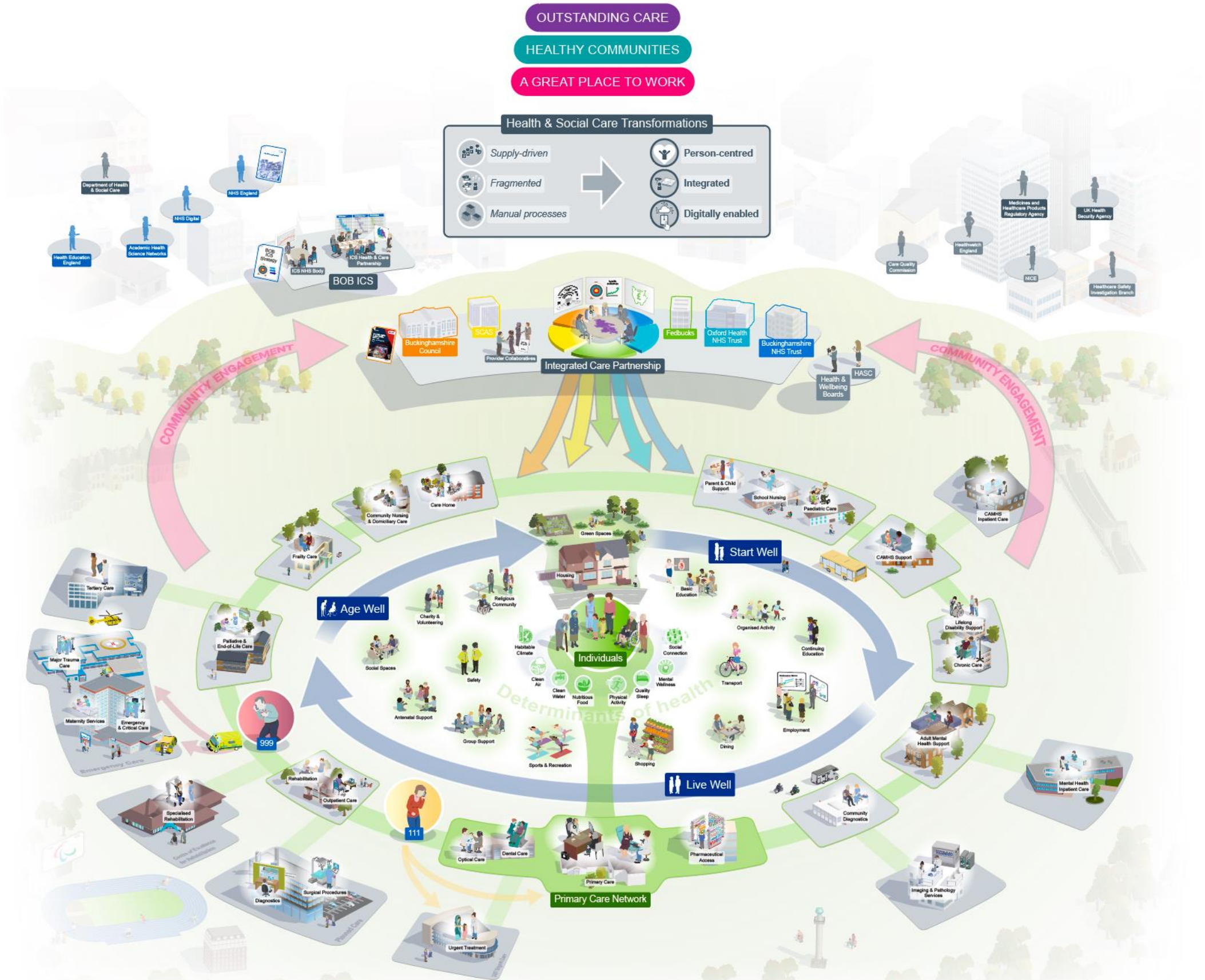
Ensure our people are
listened to, safe and supported



Any planned changes are subject to appropriate patient and resident engagement and involvement

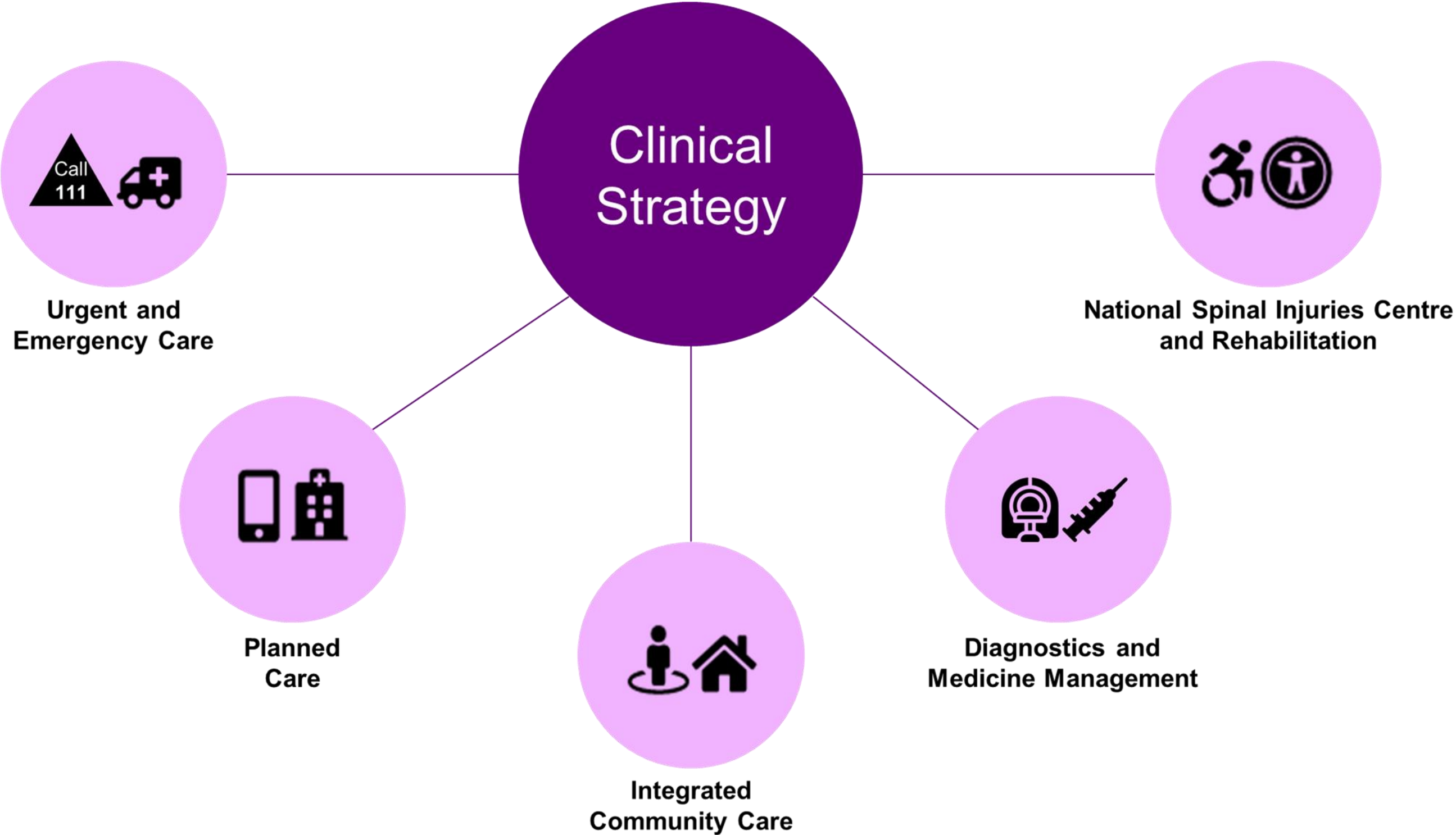
Our Strategy, Our System

OUTSTANDING CARE
HEALTHY COMMUNITIES
AND A GREAT PLACE TO WORK



Our Clinical Strategy

OUTSTANDING CARE
HEALTHY COMMUNITIES
AND A GREAT PLACE TO WORK



Any planned changes are subject to appropriate patient and resident engagement and involvement

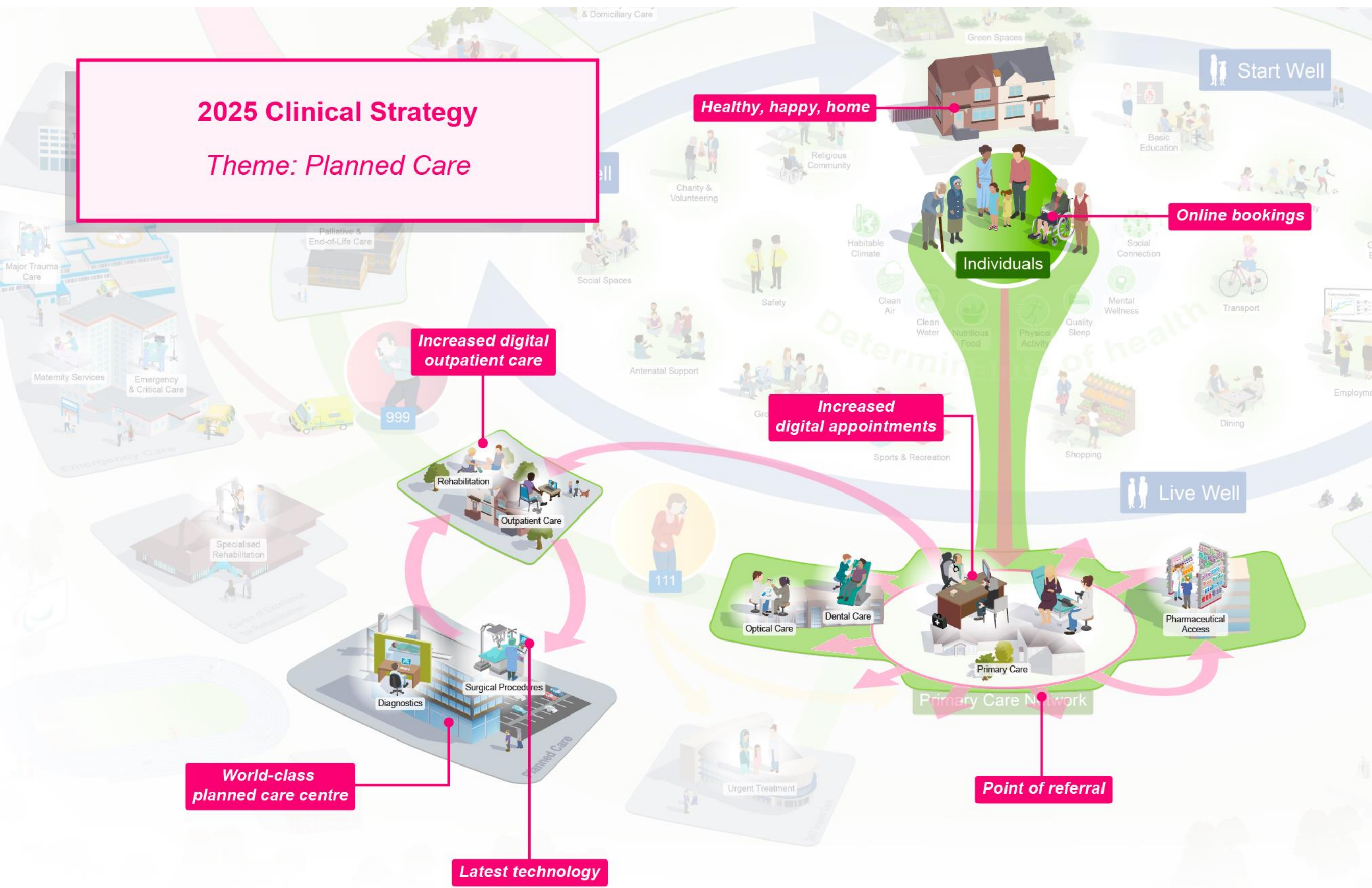
OUTSTANDING CARE
HEALTHY COMMUNITIES
AND A GREAT PLACE TO WORK



Planned Care

OUTSTANDING CARE
HEALTHY COMMUNITIES
AND A GREAT PLACE TO WORK

2025 Clinical Strategy Theme: Planned Care



Integrated Communities

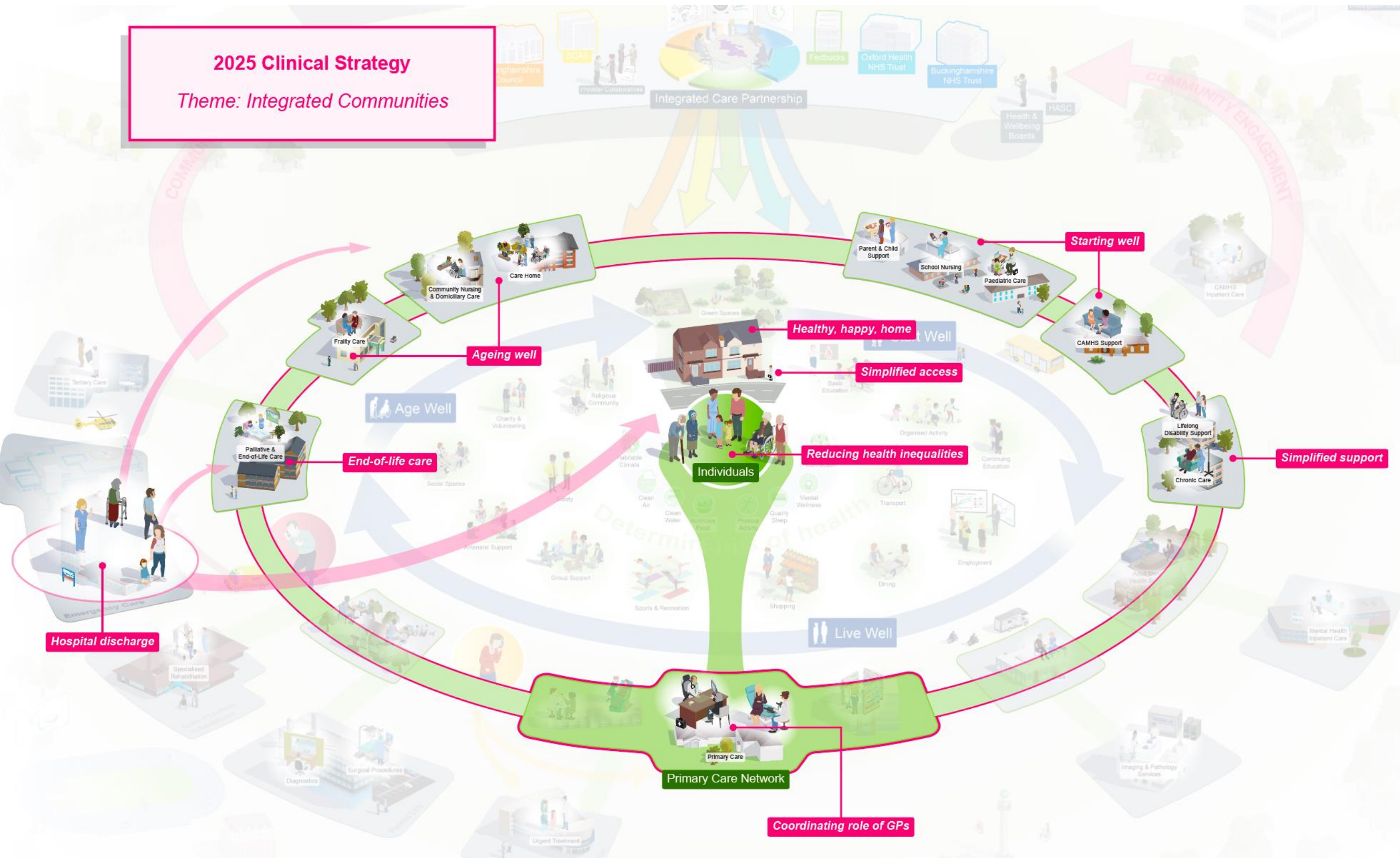
OUTSTANDING CARE

HEALTHY COMMUNITIES

AND A GREAT PLACE TO WORK

2025 Clinical Strategy

Theme: Integrated Communities

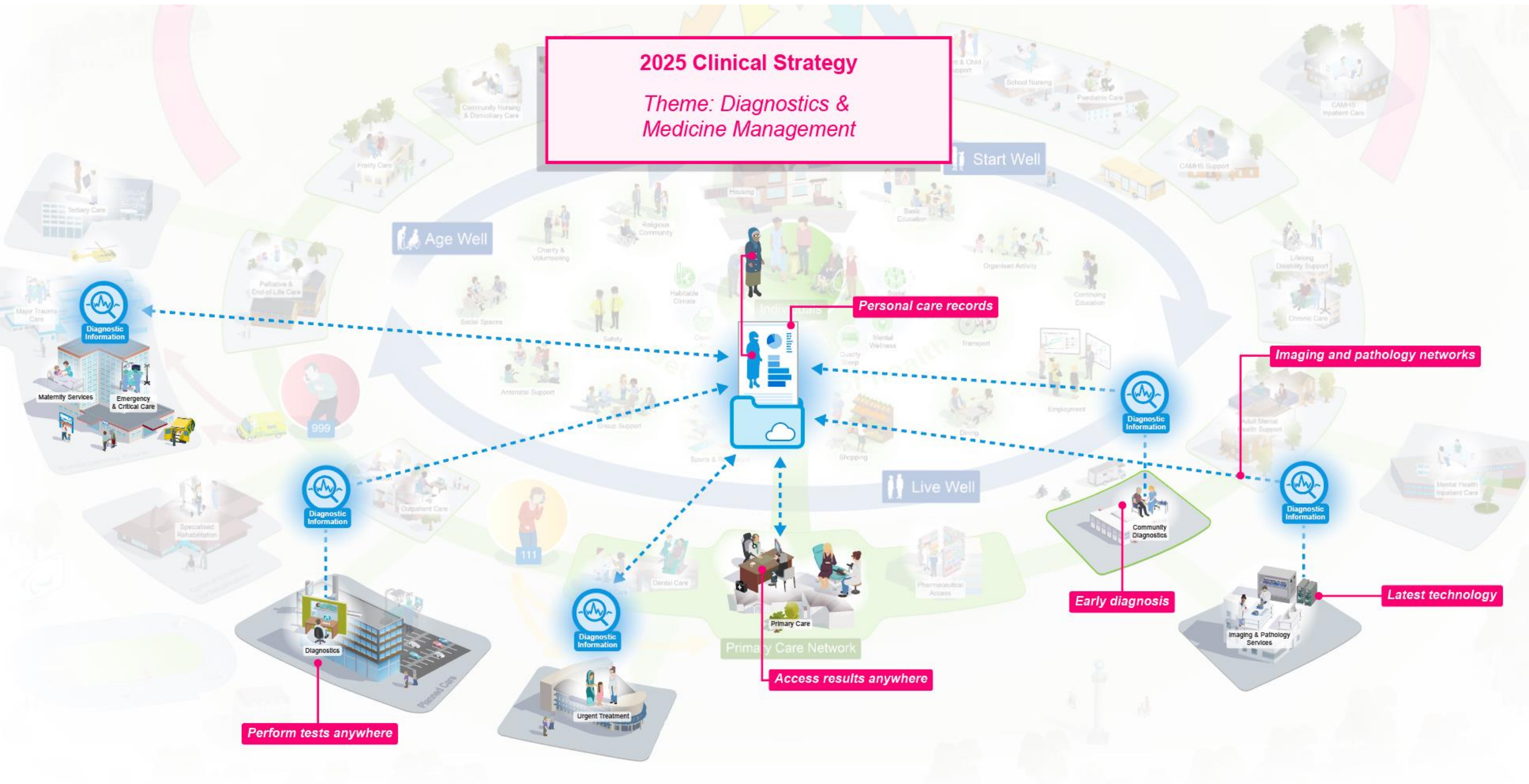


Diagnostics and Medicine Management

OUTSTANDING CARE

HEALTHY COMMUNITIES

AND A GREAT PLACE TO WORK



Centre of Excellence for Rehabilitation

OUTSTANDING CARE

HEALTHY COMMUNITIES

AND A GREAT PLACE TO WORK

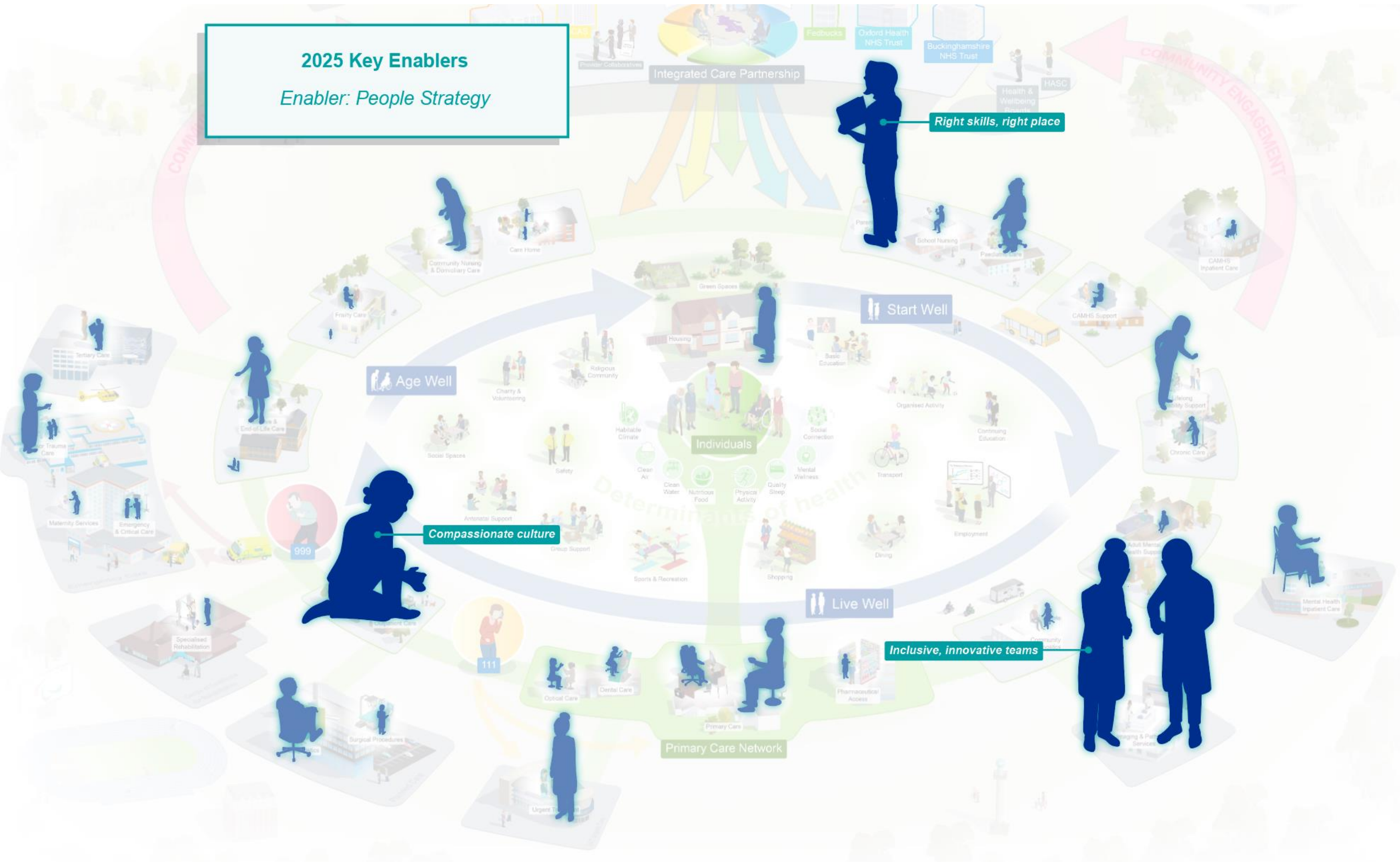


Our People

OUTSTANDING CARE

HEALTHY COMMUNITIES

AND A GREAT PLACE TO WORK



New Technologies

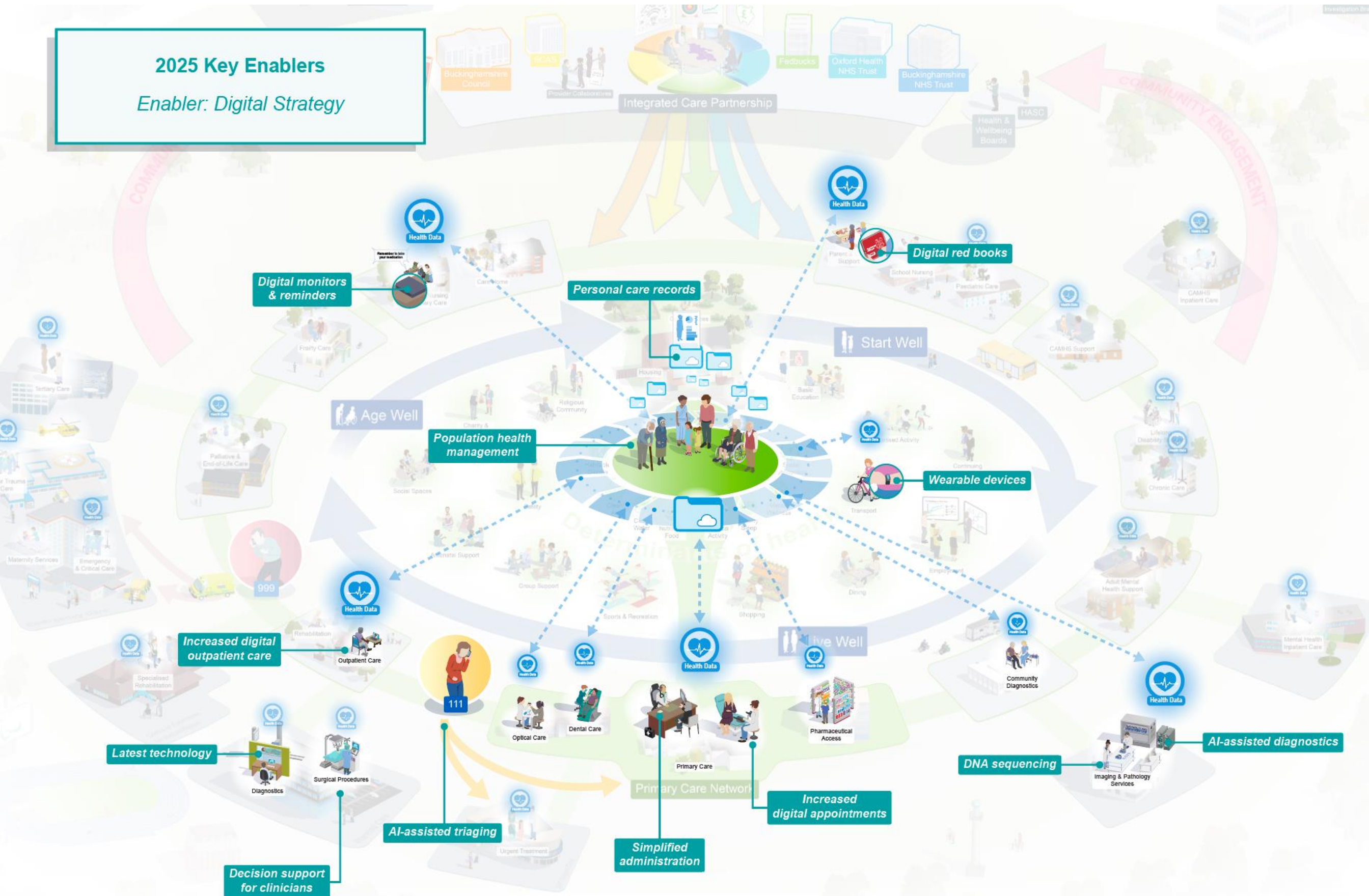
OUTSTANDING CARE

HEALTHY COMMUNITIES

AND A GREAT PLACE TO WORK

2025 Key Enablers

Enabler: Digital Strategy

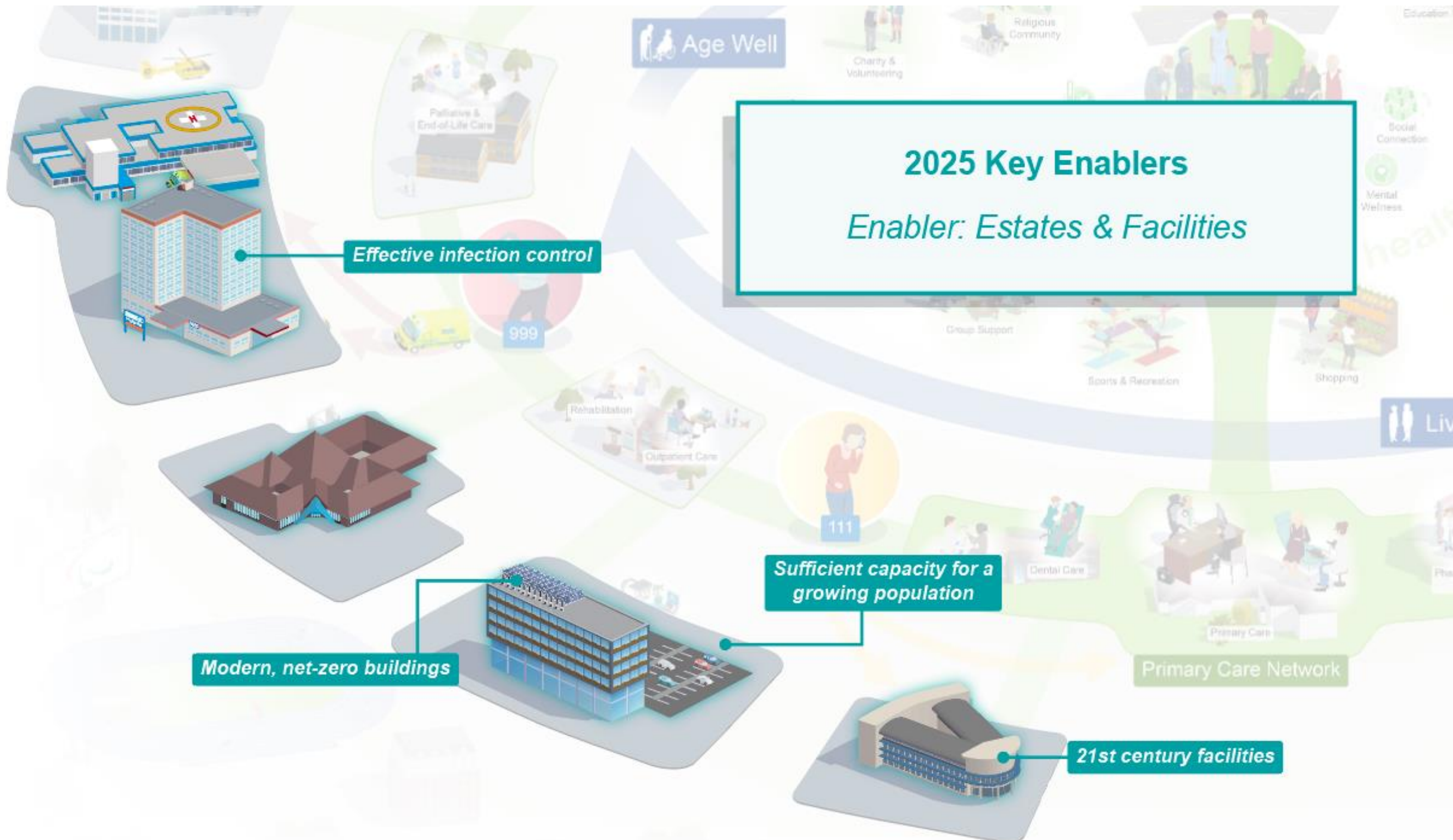


Our Estate and Facilities

OUTSTANDING CARE

HEALTHY COMMUNITIES

AND A GREAT PLACE TO WORK



Our Strategy

OUTSTANDING CARE
HEALTHY COMMUNITIES
AND A GREAT PLACE TO WORK

