

Meeting the general equality duty

Title: patient profile information

Which of the three aims is this information relevant to?

Eliminate unlawful discrimination, harassment and victimisation and other conduct prohibited by the Act.

Advance equality of opportunity between people who share a protected characteristic and those who do not.

Foster good relations between people who share a protected characteristic and those who do not.

How does this information help us to show we are paying due regard to advancing equality?

By looking at our patient profile by protected characteristic we can look at which groups are accessing our services. It enables us to look at patterns of service uptake and understand our patient flows. Heightened awareness can help us to take a more proactive approach in ensuring equity of access across all the protected characteristic groups.

Any other comments / actions

N/A

Patient Information

This section is divided into information for outpatients followed by inpatients

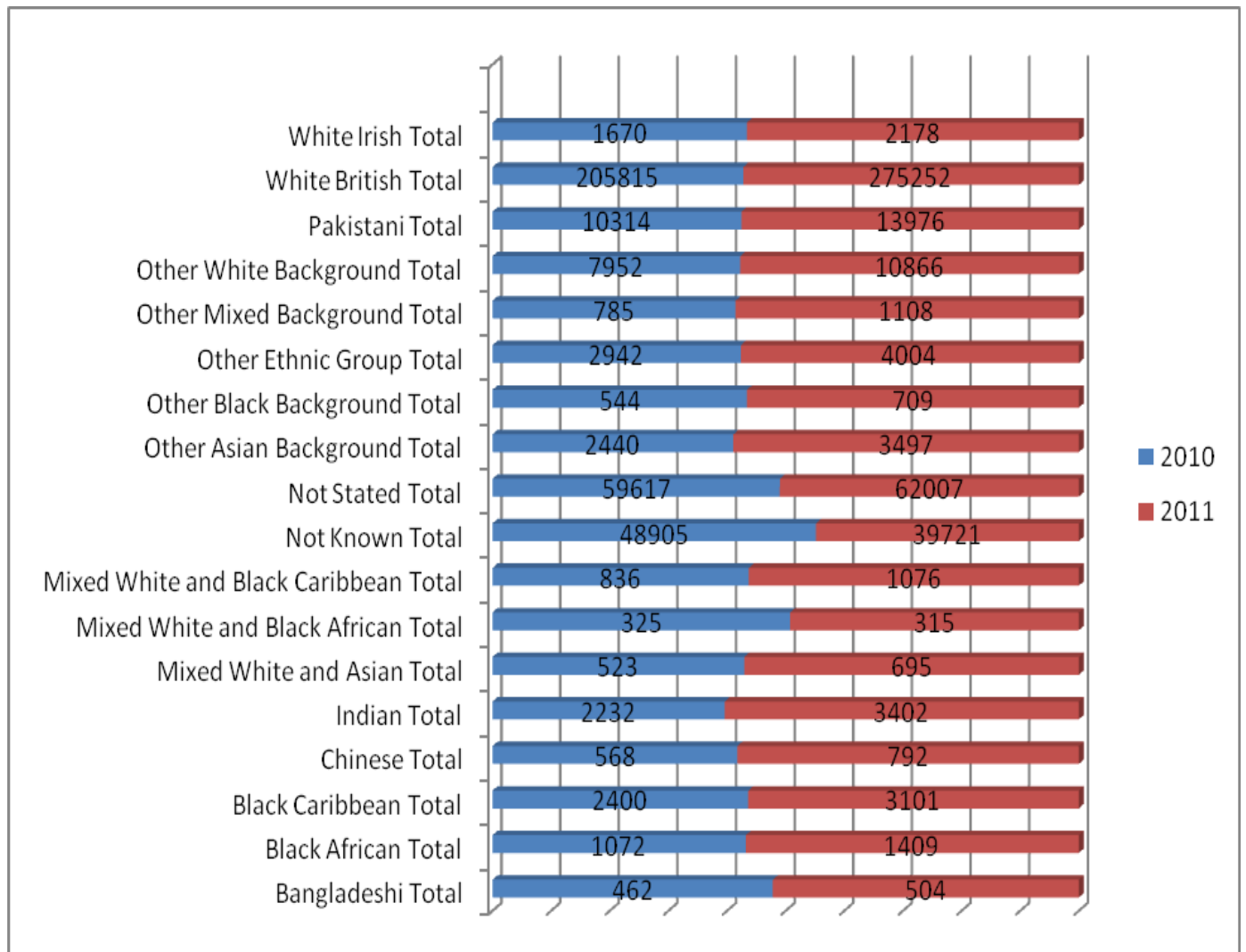
The table below illustrates the amount of 'did not attends', or DNAs by Ethnic Group in 2010 and 2011 for outpatients.

Ethnic Category	2010 Total	2011 Total
White British	11357	16527
White Irish	95	146
Bangladeshi	39	64
Black African	121	163
Black Caribbean	199	311
Chinese	34	34
Indian	247	291
Mixed White and Asian	33	75
Mixed White and Black African	38	48
Mixed White and Black Caribbean	111	156
Not Known	3172	3258
Not Stated	3858	4424
Other Asian Background	258	382
Other Black Background	76	73
Other Ethnic Group	248	321
Other Mixed Background	90	127
Other White Background	566	786
Pakistani	1334	1697
Total	21876	28883

The chart below demonstrates a comparison of the DNAs 'by Ethnic Group for 2010 and 2011 to show whether there have been increases or decreases for each group.

For most groups there seems to be a steady increase, apart from the categories "mixed white and black African" which is showing a positive decrease. "Not known has also decreased"

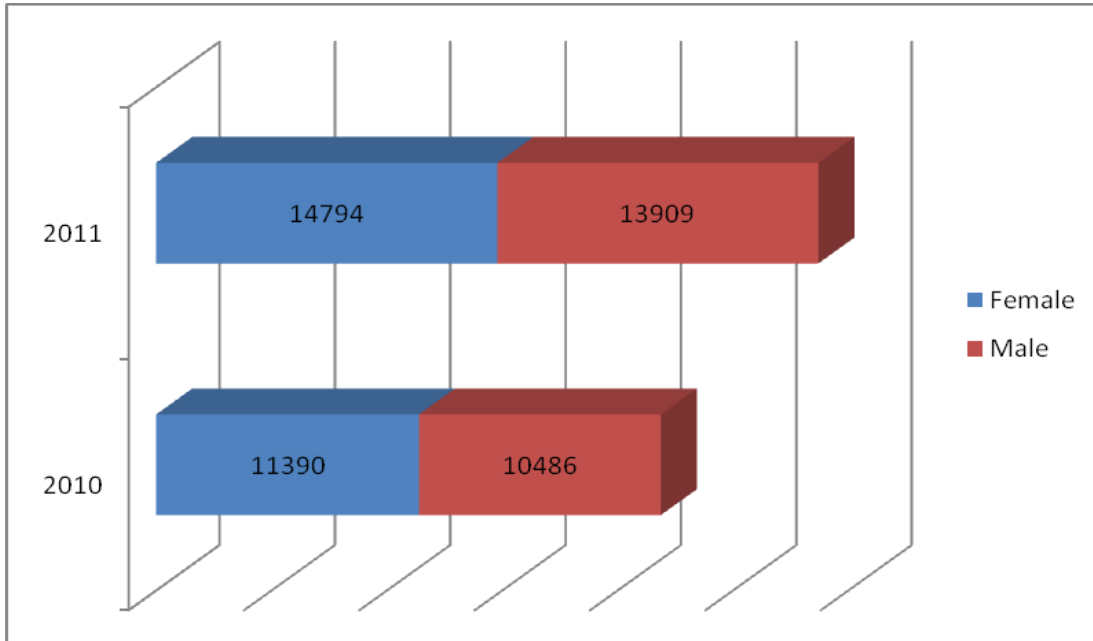
Comparison of DNAs by ethnic group 2010 - 2011



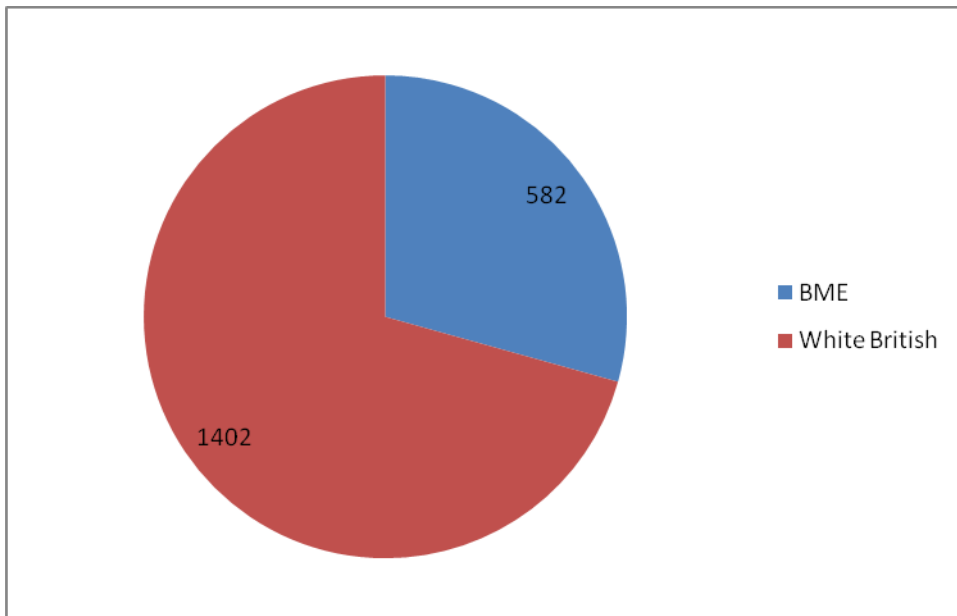
Outpatients 'Did Not Attend' (DNA) by Gender

DNA	2010	2011
Female	11390	14794
Male	10486	13909

The chart below illustrates a steady increase in 'DNAs' for both genders.

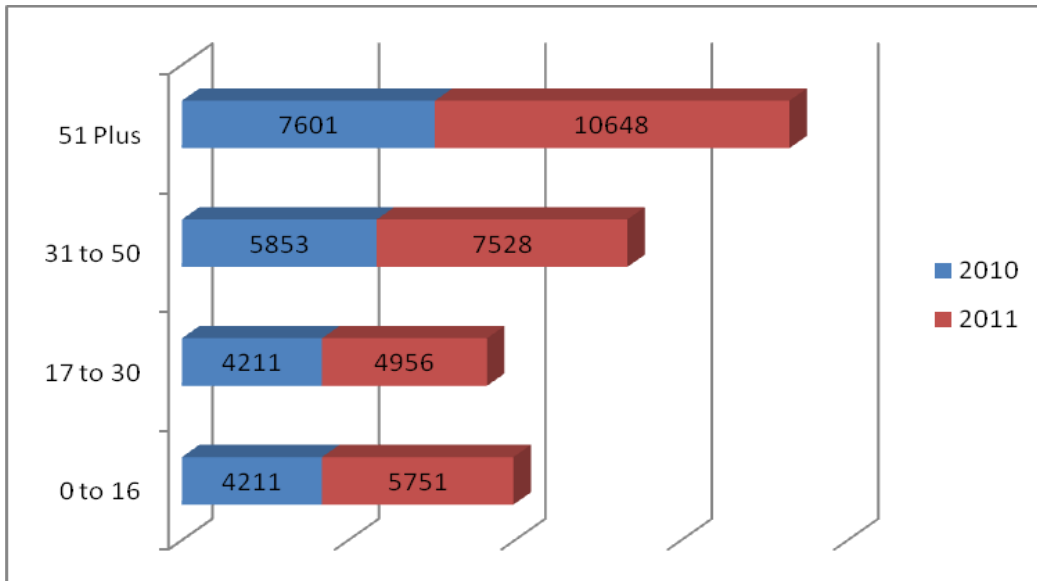


The chart below illustrates outpatients DNAs by Ethnicity for Women & Children.



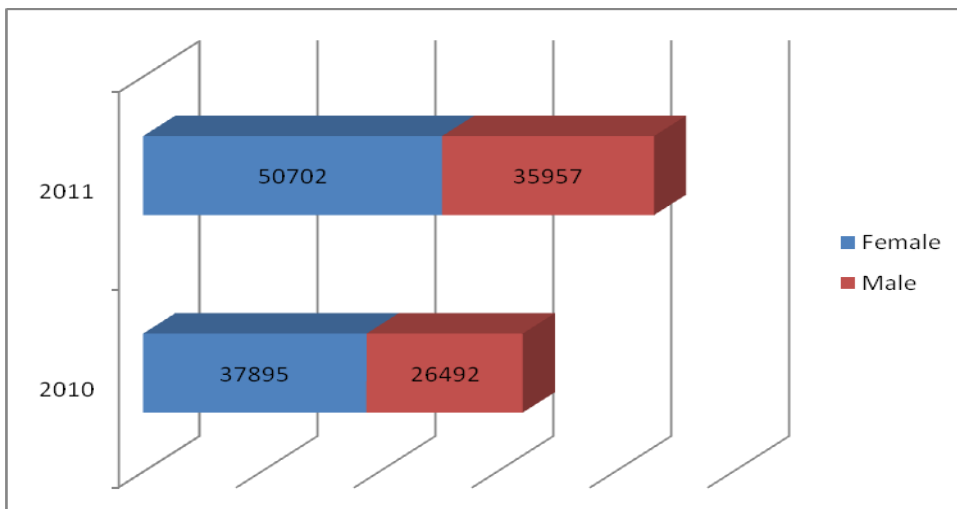
Out Patients 'Did Not Attend' (DNA) by Age

Age	2010	2011
0 to 16	4211	5751
17 to 30	4211	4956
31 to 50	5853	7528
51 Plus	7601	10648

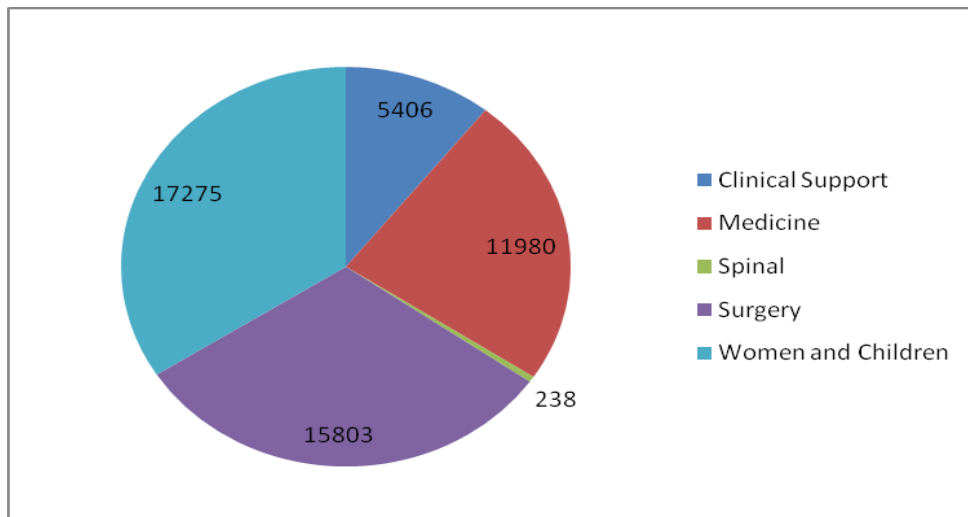


In patient data

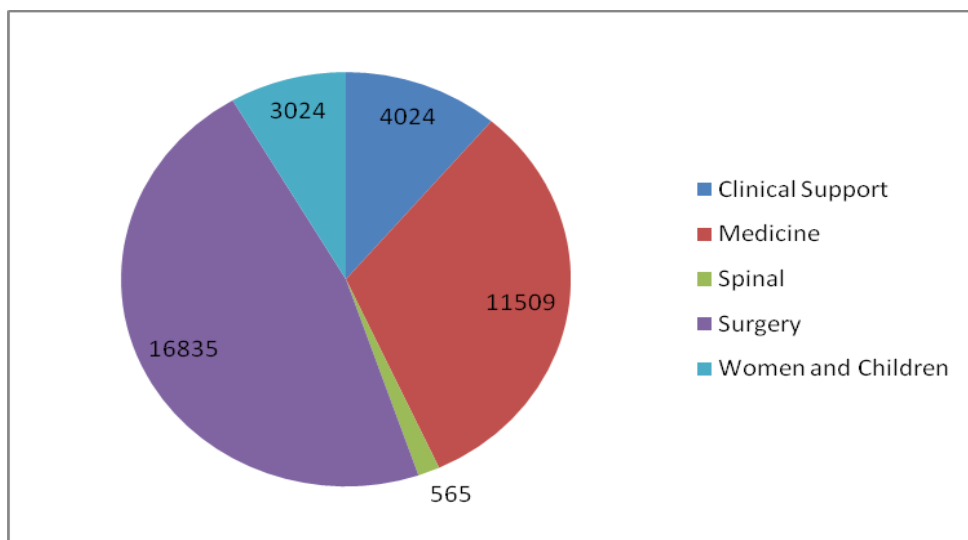
From April 2010 - Dec 2011 we have seen and cared for an increased number of inpatients, both males and females.



Women Inpatients by Division for 2011

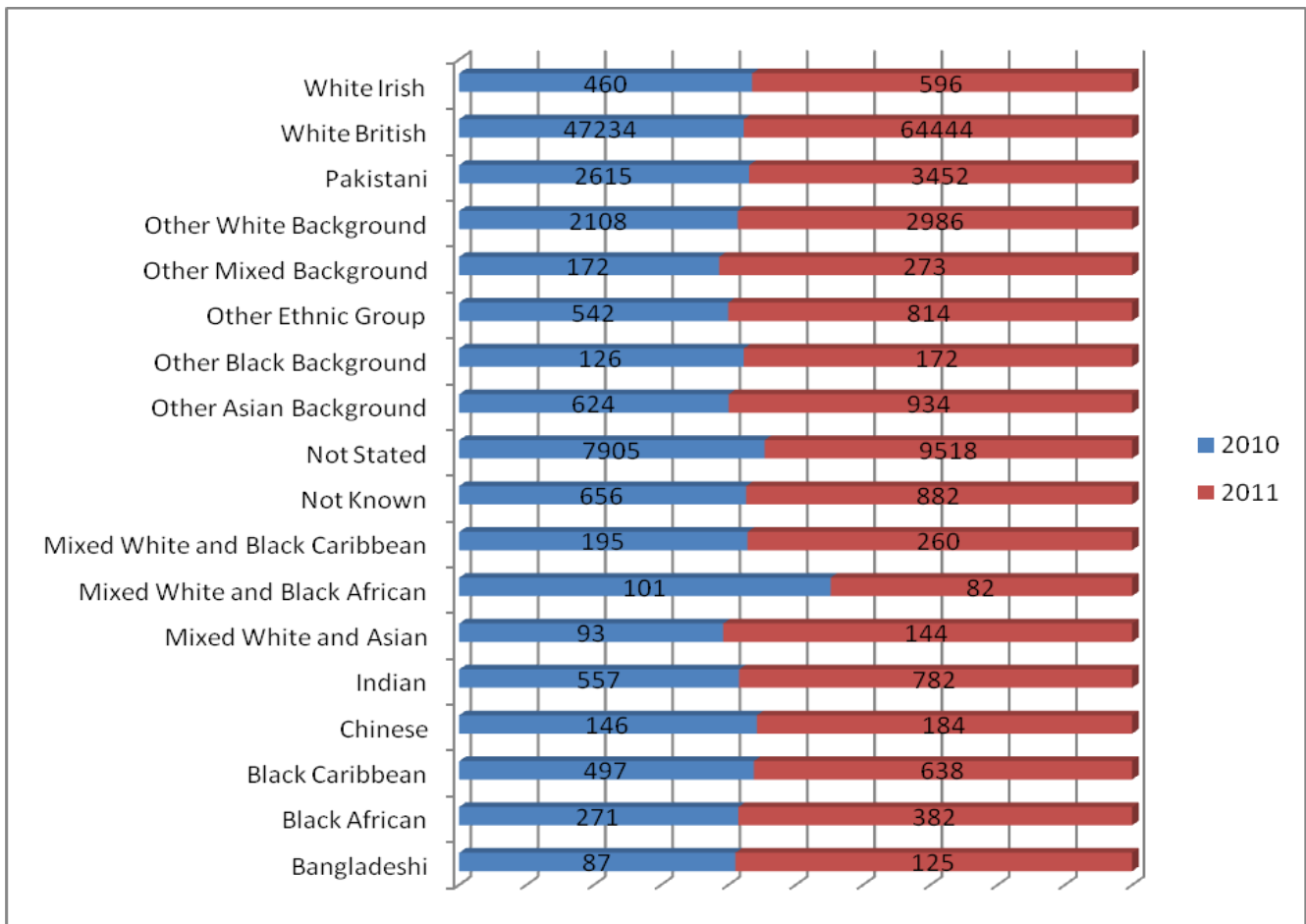


Men Inpatients by Division for 2011



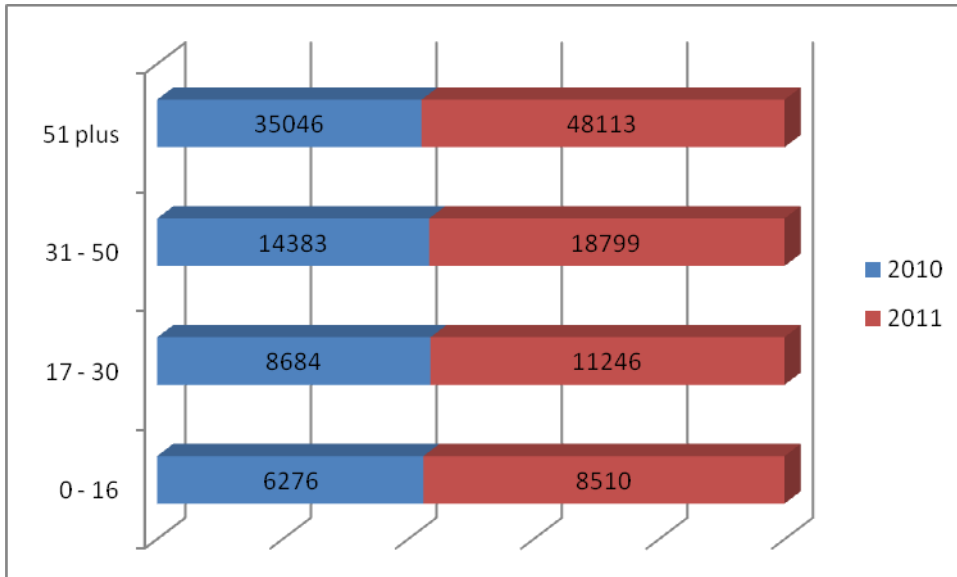
Please note the data for our Women and Childrens Division includes young male paediatric patients.

The graph below demonstrates an increase across all ethnicity groups with the exception of “Mixed White and Black African”. With specific regard to access, the consistency of the increase, suggests this may be interpreted as positive.



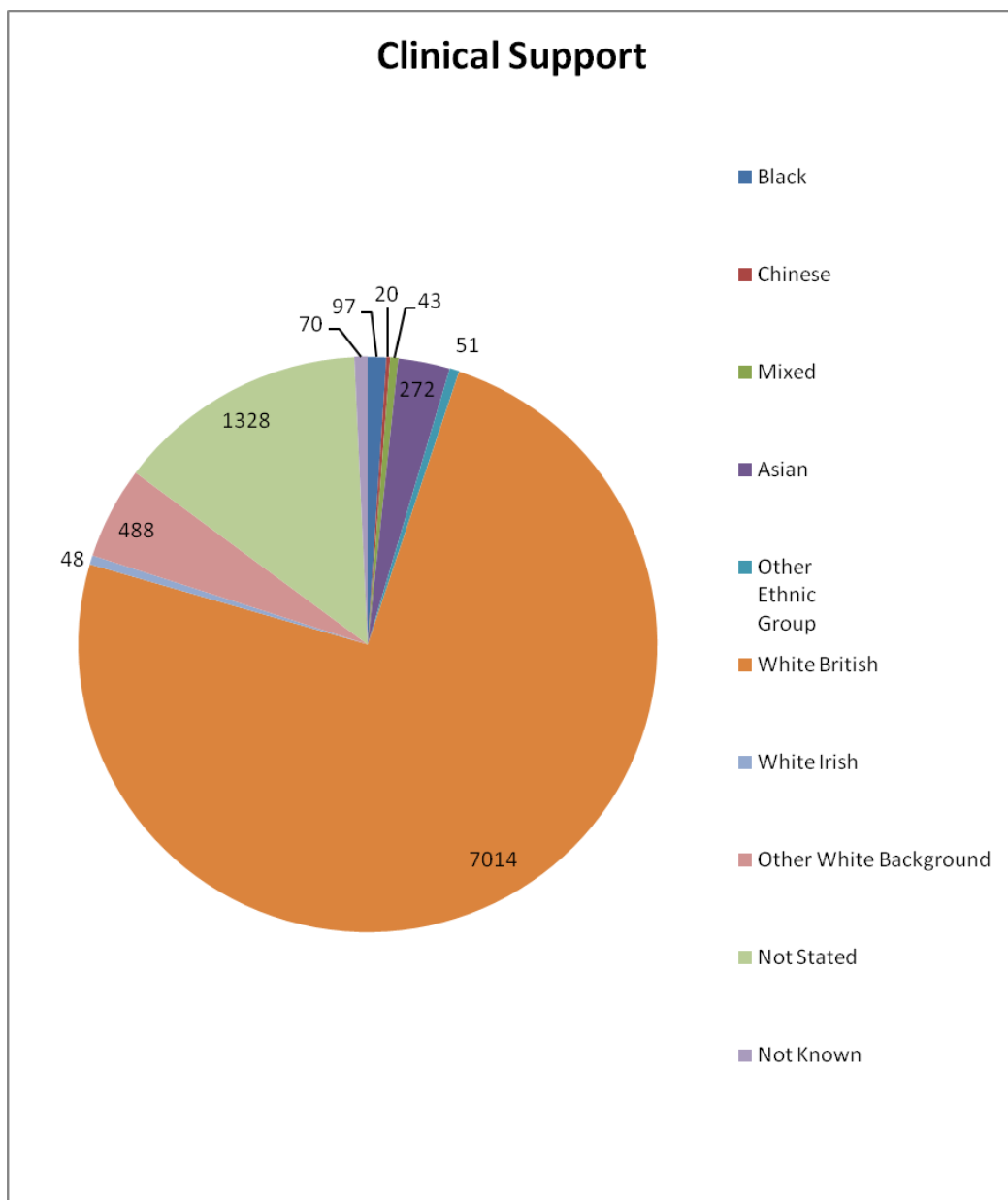
Inpatients by Age group 2010/2011

Age	2010	2011
0 - 16	6276	8510
17 - 30	8684	11246
31 - 50	14383	18799
51 plus	35046	48113

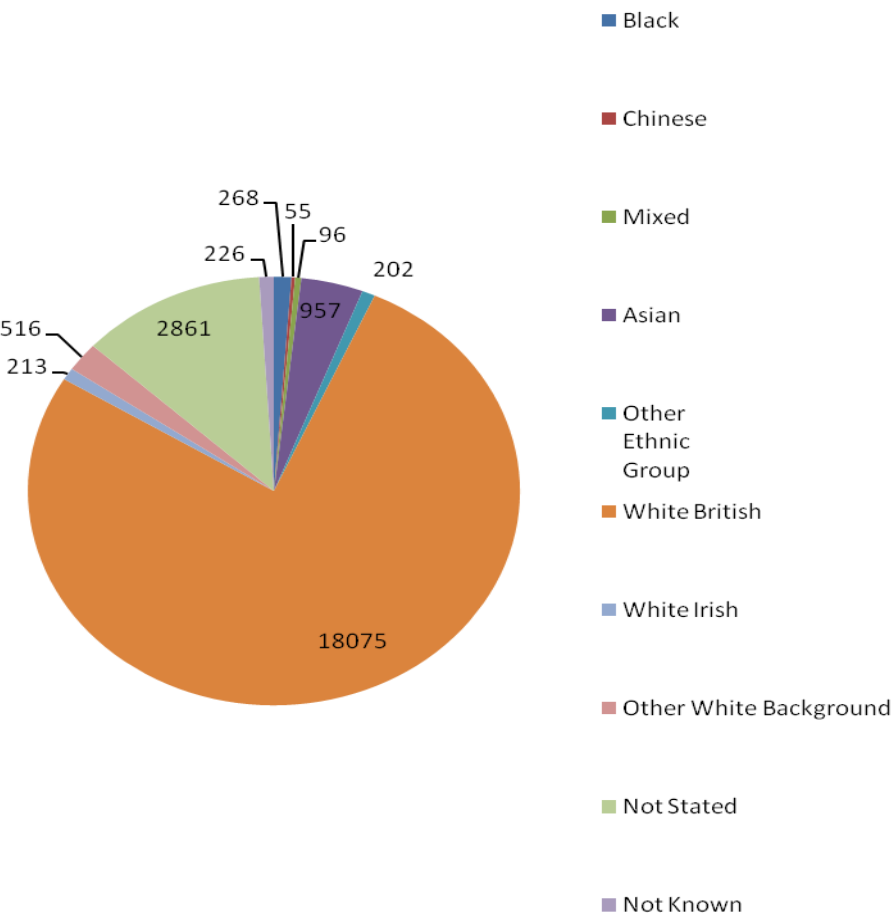


In the 51 plus age group, there is a large increase of 13067 inpatients. The other age groups have increased on average by 2500. This is explained by the integration with community services and therefore the addition of inpatients in community hospitals.

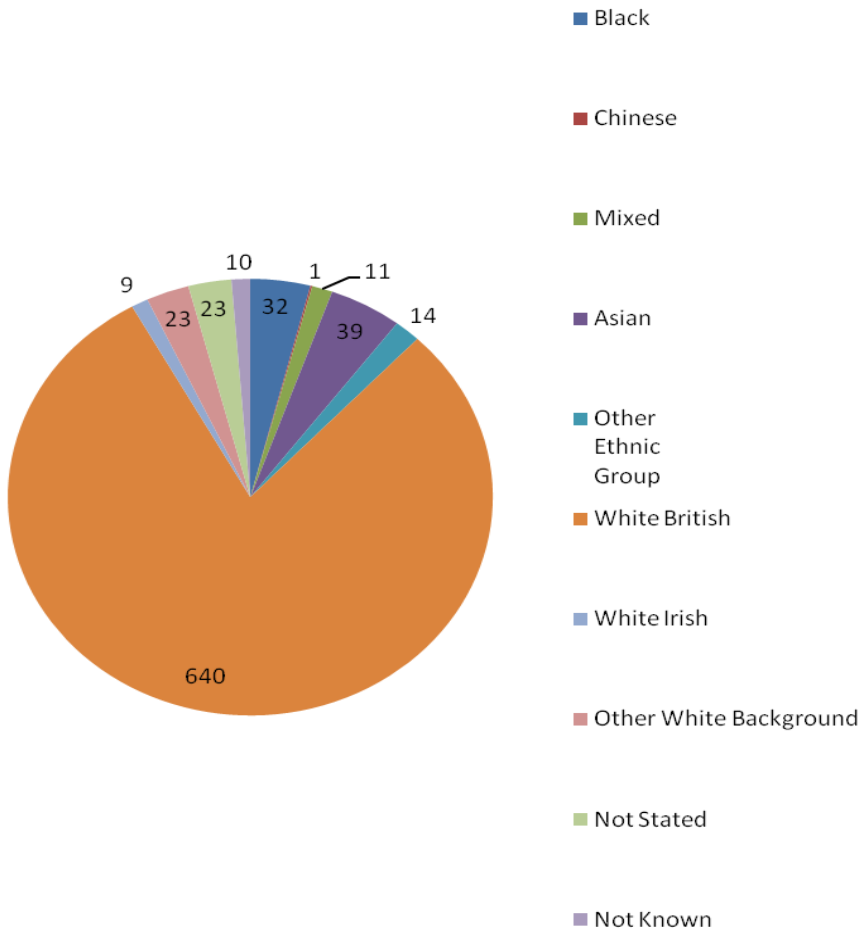
The following charts show a breakdown of inpatients by “Ethnicity” for each of our five divisions for 2011.



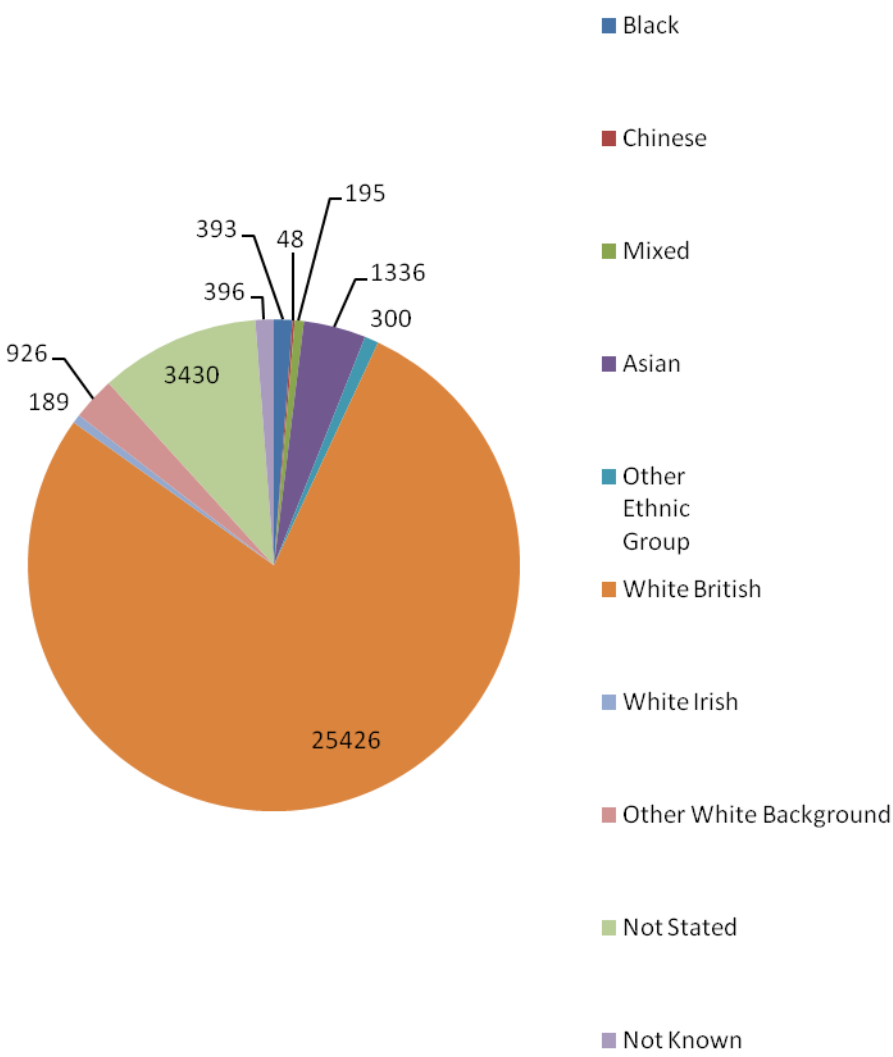
Medicine



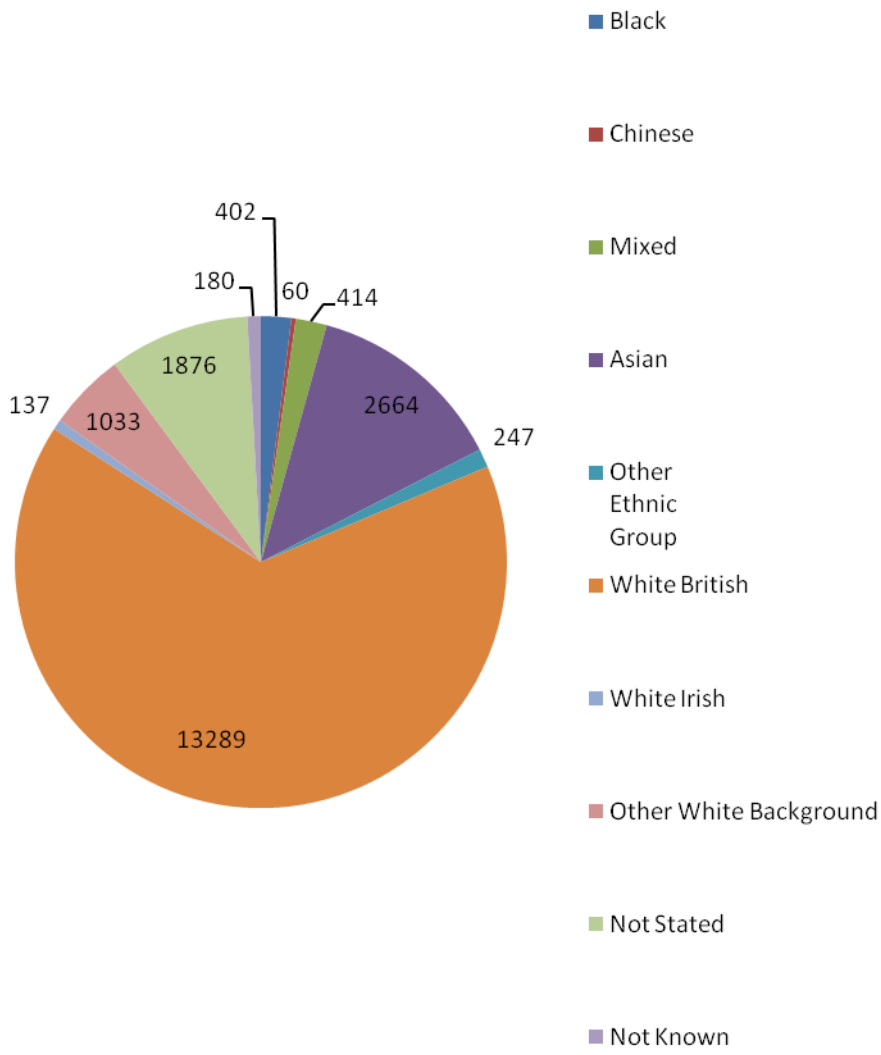
Spinal



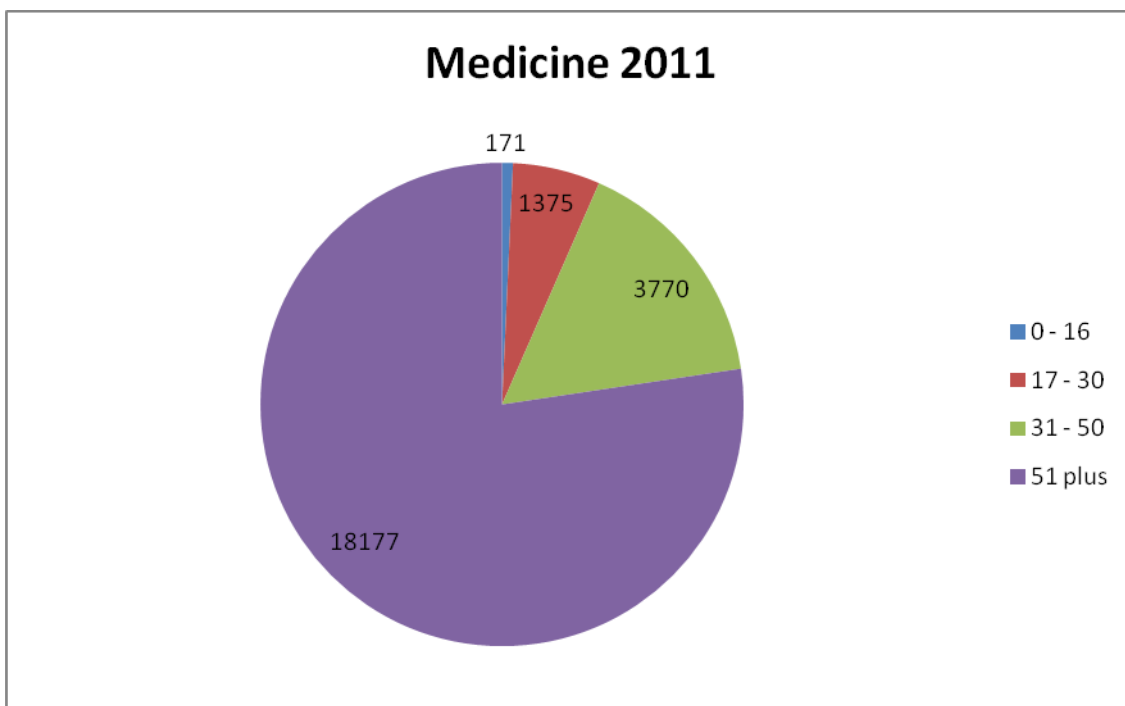
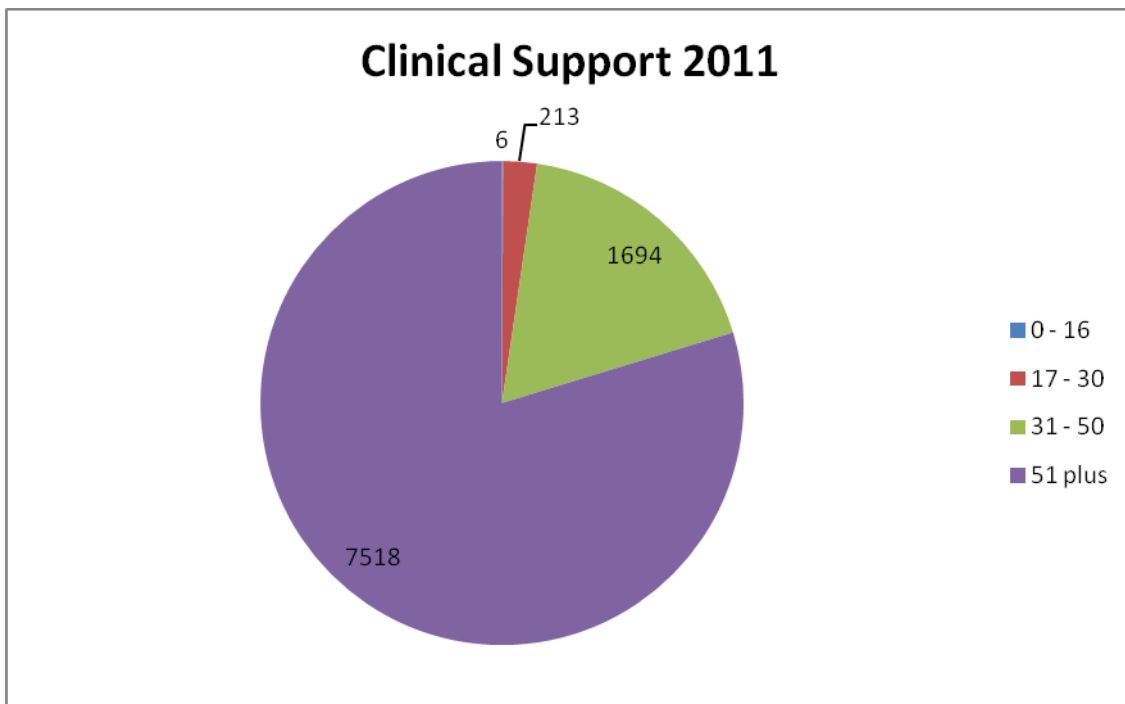
Surgery



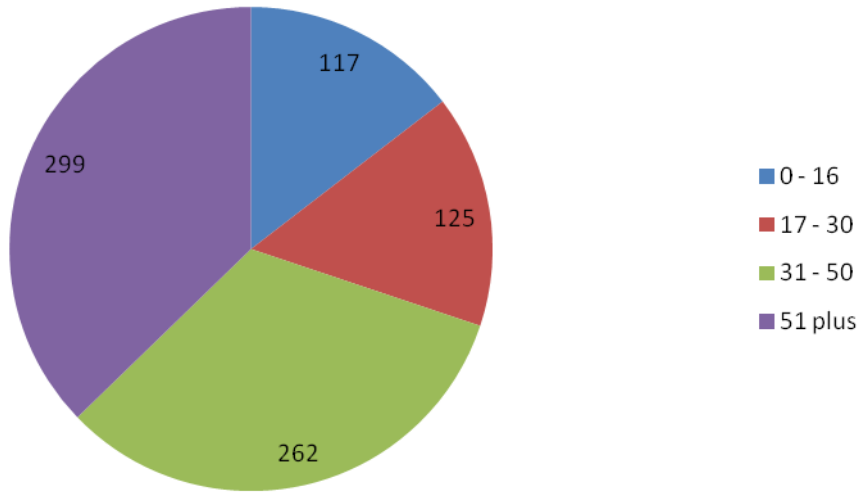
Women and Children



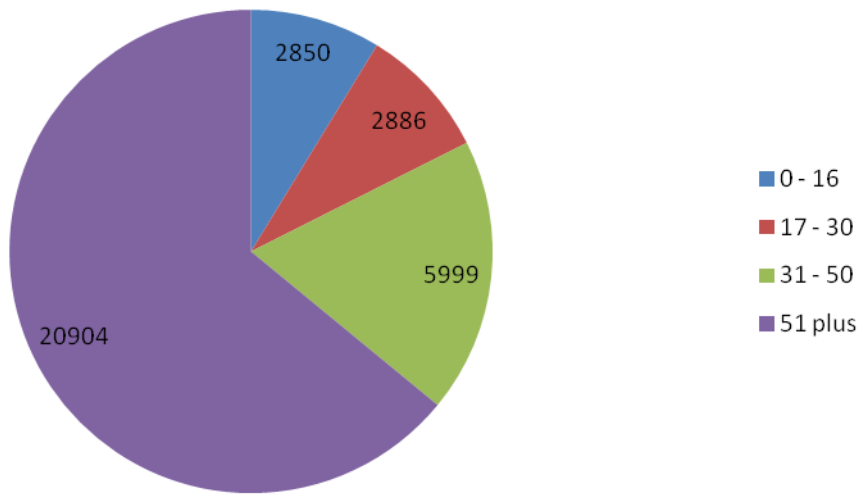
Inpatients by "Age" for each of our five divisions



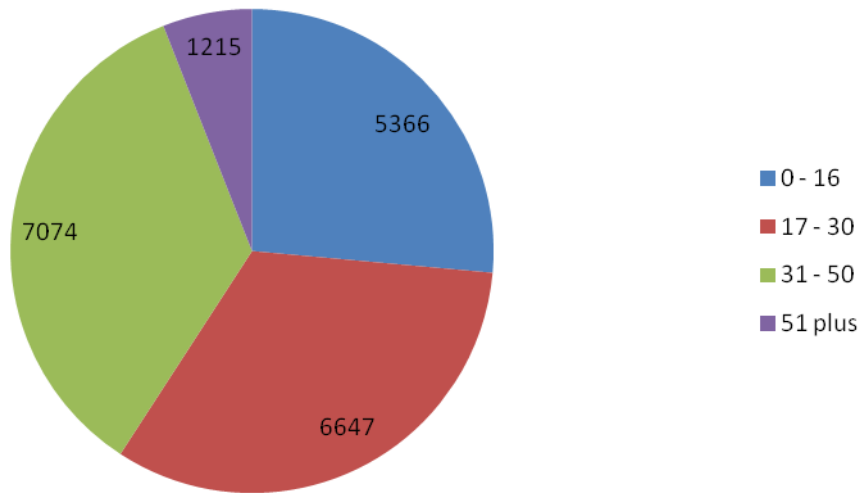
Spinal 2011



Surgery 2011



Womens and Childrens 2011



Please note the womens and childrens division information includes data for maternity and paediatrics which is why the chart demonstrates a wide range of age groups accessing these services. In particular it explains why there is a significant difference to the other divisions for age group 51 plus.